

# SPACE AVAILABLE

## DEER PARK'S PREMIER LOCATION



**W. 110 Crawford**

**SHOWING NOW**  
**LEASING JANUARY 1st**

**Suite 'A' Corner Location**  
**For lease at \$500/mo.**  
**includes :**  
**utilities and common area maintenance**

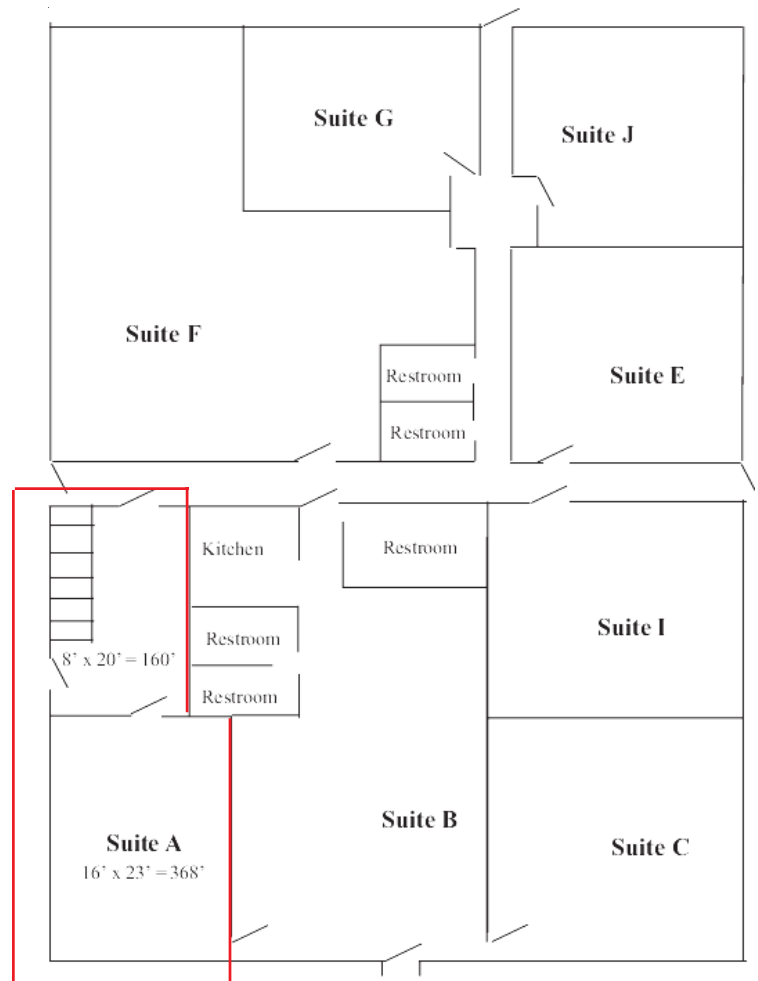
**Outside entrance**  
**Main Hall Entrance**  
**Basement access**  
**Ample off street parking**

**Heavy traffic flow**  
**Strong customer base**  
**Steady Clientel**

Contact:  
DLJWF, Inc Property Management

David 509-994-0037

Current Tenants:  
Edward Jones  
Casco Inc.  
Krystalline Message  
Therapeutic Message  
Jay Lindh Attorney  
Patti's Custom Sewing  
Quilt Lounge & Knittery



**DLJWF, Inc**  
**Property Management**



509-922-7325 FAX  
509-994-0037 Phone  
davidmontecucco@comcast.net